

LIPHATECH®

EXPERIENCED *People.* INTELLIGENT *Solutions.*

PRODUCT GUIDE

EXPERIENCED *People.*

Experienced people make the difference at Liphatech. **With over 150 years of technical pest management experience**, all members of the Liphatech team work together to provide intelligent pest management solutions. The substantial tenures of our technical experts equate to some of the most elevated product knowledge and customer service found in the pest management industry today.

Along with guidance and strategies for integrated pest management (IPM), they can help you determine the best solution for your pest challenges.



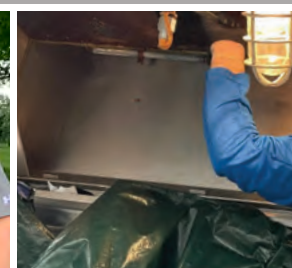
Our team is ready to help you with your particular pest challenges. Get in touch with a Liphatech technical expert in your area.

INTELLIGENT *Solutions.*

Liphatech is a subsidiary of France's Group De Sangosse, a worldwide leader in the manufacturing and distribution of pest control products. De Sangosse and Liphatech **invest substantial resources in the research and development of new pest control technologies** to better help pest management professionals (PMPs) and the industry. Liphatech advocates for pest management practices that protect the health and safety of people, wildlife and the environment.

Liphatech brought the future to pest management with innovation and chemistry, developing the first soft bait rodenticides and three of the industry's active ingredients – **chlorophacinone** and **bromadiolone**, as well as **difethialone** – a Liphatech exclusive.

Today, we offer a diversified portfolio of products and strategies for a variety of pests and environments to help PMPs remain responsible and profitable.

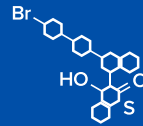




LIPHATECH MILESTONES

rozol® 1967

Invents chlorophacinone, its first multi-feed anticoagulant



1988

Invents difethialone, a second-generation anticoagulant

AEGIS® 2000

Introduces Aegis bait station line

FIRST STRIKE 2008

Launches first soft bait (difethialone)

RESOLV 2012

Launches bromadiolone soft bait

FLATLINE 2020

Launches first chlorophacinone soft bait for the professional market

NoTox™ 2021

Creates NoTox family of soft bait and mini block attractants

RESOLV MINI BLOCKS 2025

Begins offering Resolv in mini blocks

1976



Invents its original second-generation anticoagulant, bromadiolone

1995 generation®

Introduces whole grains with difethialone

2005 BlueMax™

Begins using mold inhibitors with difethialone

2010 AEGIS-RP ANCHOR

Launches preassembled weighted bait station

2016 TAKE DOWN II

Introduces first bromethalin soft bait for the professional market (originally registered as TakeDown)

2021 iG CARBON DIOXIDE
POWERED BY LIPHATECH

Acquires alternative control for burrowing rodents and fumigation of insects

bug scents
POWERED BY LIPHATECH

2025 Peritect 360 IC

Introduces Peritect 360 IC for insect control and BugScents bed bug monitoring system

RODENT CONTROL

SOFT BAITS

We are The Soft Bait Innovators®. With a variety of active ingredient formulations to solve your everyday or tough rodent challenges, Liphatech's industry-leading soft bait rodenticides are labeled for the control of Norway rats, roof rats, house mice and other rodent species. Each Liphatech soft bait is palatable and maintains its integrity in hot environments. In fact, palatability and integrity are the hallmarks of these baits, each with a bait matrix that rodents will eat.



LIPHATECH

FirstStrike®



10g pouch

- Case of 4-4 lb. bags (182 pouches/bag)
- Case of 2-8 lb. pails (363 pouches/pail)
- 16 lb. pail (726 pouches)

40g pouch

- 16 lb. pail (182 pouches)

- Liphatech-exclusive active ingredient: difethialone (25 ppm); Vitamin K₁ is the antidote.
- An excellent choice for clean-out, lingering rodents or heavy infestations.
- Maintains integrity in hot environments.
- Easy to place securely on bait station rods and on the SST feeding device.



Resolv®



12g pouch

- Case of 4-4 lb. bags (151 pouches/bag)
- 16 lb. pail (604 pouches)

40g pouch

- 16 lb. pail (182 pouches)

- Active ingredient: bromadiolone (50 ppm); Vitamin K₁ is the antidote.
- An excellent choice for the budget-minded PMP faced with moderate rodent infestations.
- Maintains integrity in hot environments.
- Easy to place securely on bait station rods and on the SST feeding device.



Flatline®



28g pouch

- 4 lb. bag (65 pouches)
- Case of 8-4 lb. bags (65 pouches/bag)
- 16 lb. pail (253 pouches)

- Active ingredient: chlorophacinone (50 ppm); Vitamin K₁ is the antidote.
- First and only chlorophacinone soft bait rodenticide for the professional market.
- Multiple-feed anticoagulant rodenticide.
- Best choice for everyday use to help stop damage caused by rodents.



TakeDown® II



8g pouch

- 4 lb. bag (227 pouches)
- Case of 4-4 lb. bags (227 pouches/bag)

- Active ingredient: bromethalin (100 ppm).
- An acute rodenticide for the professional pest control market.
- Provides faster results than anticoagulant rodenticides.
- Effective in fighting anticoagulant-resistant rodent populations, especially those in commercial settings.



NoTox™



10g pouch

- 1 lb. bag (45 pouches)
- Case of 8-1 lb. bags (45 pouches/bag)

- Soft bait attractant with no active ingredient. Poses no danger to rodent predators or other curious animals.
- Attract rodents, nuisance animals and pests with a nontoxic formulation designed to monitor activity.
- Bait can be removed from pouch for flexible application and can be used with snap traps, glue boards, bait stations and live catch traps.
- Highly attractive even when competing food is available.



RODENT CONTROL

MINI BLOCKS

Liphatech mini blocks have provided PMPs with solutions for over 30 years, with an ongoing commitment to driving the industry forward. Our latest innovation, Resolv® Mini Blocks, exemplifies our commitment to helping PMPs by realizing the same benefits of its soft bait formulation in a durable, all-weather mini block. With more innovation to come, Liphatech continues to increase a PMP's flexibility with options to combat even the toughest pest problems.



LIPHATECH

Generation®



20g block size

- 16 lb. pail (363 blocks)
- Case of 4-4 lb. bags (90 blocks/bag)

- Liphatech-exclusive active ingredient: difethialone (25 ppm); Vitamin K₁ is the antidote.
- Effective and palatable for rats and mice.
- Designed with rodent gnawing edges and a center hole for securing in bait stations.
- Easy to place securely on horizontal and vertical bait station rods.



BlueMax™



20g block size

- 16 lb. pail (363 blocks)

- Liphatech-exclusive active ingredient: difethialone (25 ppm), Vitamin K₁ is the antidote.
- An ideal maintenance rodenticide for audited accounts and where crumbs and scatter are a concern.
- Contains preservatives as mold inhibitors.
- Blue marker dye can be seen in droppings.
- Ideal for placement in humid, high-moisture conditions.



Resolv®



1 oz. block size

- 16 lb. pail (250 blocks)

- Active ingredient: bromadiolone (50 ppm), Vitamin K₁ is the antidote.
- Attractive to Norway rats, roof rats and house mice.
- Designed with rodent gnawing edges and a center hole for securing on vertical or horizontal rods.
- All weather bait for wet or dry areas.
- Ideal for ongoing maintenance and suitable for cleanouts.

Resolv Mini Blocks are registered in most states. Please scan QR code for current registration info.



TakeDown® II



14g block size

- 4 lb. bag (128 blocks)
- Case of 4-4 lb. bags (128 blocks/bag)

- Active ingredient: bromethalin (100 ppm).
- An acute rodenticide for the professional pest control market.
- Provides faster results than anticoagulant rodenticides and is effective in fighting anticoagulant-resistant rodent populations, especially those in commercial settings.
- Designed with rodent gnawing edges and a center hole for securing on vertical or horizontal rods.

TakeDown II Mini Blocks are registered in most states. Please scan QR code for current registration info.



NoTox™



20g block size

- 10 lb. pail (227 blocks/pail)

- Mini block attractant with no active ingredient.
- Attract rodents, nuisance animals and pests with a nontoxic formulation designed to monitor activity.
- Poses no danger to rodent predators or other curious animals.



— RODENT CONTROL —

MORE BAIT OPTIONS

In addition to our industry-leading soft baits and mini blocks, Liphatech also offers PMPs other bait options for added versatility, hard-to-reach areas or where moisture is a concern. These formulations include pellets, pellet place packs, meal bait and paraffin blocks.



LIPHATECH

Generation®



Bulk Pellets

- 20 lb. pail

- Liphatech-exclusive active ingredient: difethialone (25 ppm); Vitamin K₁ is the antidote.
- Labeled for burrow baiting; pellet shape mimics seeds in rodents' environment.
- Added paraffin provides moisture tolerance.



Pellet Place Packs

25g place pack

- Case of 4 pails (100 packs/pail)

- Liphatech-exclusive active ingredient: difethialone (25 ppm); Vitamin K₁ is the antidote.
- Ideal for proper placement in hard-to-reach baiting locations.
- Paraffinized formula works well where moisture is a concern.
- Special place pack film keeps pellets fresh until consumed by rodents.

BlueMax™



Meal Bait

- 18 lb. pail

- Liphatech-exclusive active ingredient: difethialone (25 ppm); Vitamin K₁ is the antidote.
- Labeled for burrow baiting of rats and mice in areas where non-targets cannot access the meal.
- Contains preservatives as mold inhibitors.
- Blue marker dye can be seen in droppings.



Maki®



Bulk Pellets

- 20 lb. pail

- Active ingredient: bromadiolone (50 ppm), Vitamin K₁ is the antidote.
- Paraffinized pellets approved for burrow baiting.
- Works well where moisture is a concern.



Pellet Place Packs

1.5 oz. place pack

- Case of 4 pails (75 packs/pail)

- Active ingredient: bromadiolone (50 ppm), Vitamin K₁ is the antidote.
- For hard-to-reach baiting locations away from non-target animals.
- Paraffinized formula works well where moisture is a concern.
- Special place pack film keeps pellets fresh until consumed by rodents.

Paraffin Blocks

1 lb. block size (scored for easy separation into eight 2 oz. bars)

- Box of 20 blocks

- Active ingredient: bromadiolone (50 ppm), Vitamin K₁ is the antidote.
- Paraffinized 1 lb. blocks labeled for sewers, steam tunnels, outdoor stations and other places where moisture causes bait to quickly spoil.
- Center hole aids in sewer placements.

BorderLine®



Pellets

- 22 lb. bag

- Active ingredient: chlorophacinone (50 ppm), Vitamin K₁ is the antidote.
- Restricted Use Pesticide labeled for the outdoor control of Norway rats, roof rats, house mice and voles.
- Weather-resistant paraffinized pellets hold up to rain and irrigated conditions.



Restricted Use Pesticide

BorderLine is a restricted use product for use only by certified applicators or persons under their direct supervision. It is registered in AL, AZ, CA, CO, FL, HI, IA, ID, IL, IN, KS, MA, MI, MN, MO, MT, NE, NV, NC, ND, OK, OR, PA, SD, TX, UT, WA and WI. It is the responsibility of the user to read and follow all label directions.

RODENT CONTROL

BAIT STATIONS

Rodent bait stations have long been a key tool in the PMP's arsenal. High-performing, tamper-resistant and quick-to-open with one universal key, Aegis® bait stations offer a versatile design to help PMPs provide faster service. In combination with the right bait and with an entry/exit design that encourages rodents to enter, they are a popular and effective way to get ahead of an infestation of damage-causing rodents.



LIPHATECH®

Aegis®-RP



12 7/8" long; 7 7/8" wide (including hinge); 4" high (lid closed); 3 1/2" high (lid open).

- Use vertical or horizontal bait rods (included). Using elevated horizontal rods prevents bait from touching the station floor.
- Four fast-draining holes keep bait fresh and dry; operates down to -20° F for long service life.
- SecureV™ Technology reduces the ability of animals to free bait; compatible with snap traps.
- Mechanical hinge secures lid which opens conveniently away from wall; predrilled holes and knock-out anchor points provide multiple ways to secure station.



Aegis®-RP Anchor



12 7/8" long; 7 7/8" wide (including hinge); 5 1/2" high (lid closed); 5" high (lid open).

- Versatile Aegis-RP station with over 11 pounds of concrete attached to keep the station securely where placed.
- Preassembled; building-grade concrete adds a professional look.
- Strengthening fibers are embedded in the concrete for extra durability.
- Design fits flush against wall or vertically oriented even with concrete attached.



Aegis® Rat



13 9/16" long; 10 5/8" wide (including hinge); 3 1/2" high (lid closed); 3 1/8" high (lid open).

- Specifically designed to cater to the feeding habits of rats.
- Available in all-black or black with a clear lid.
- The clear lid model makes bait monitoring easy and efficient and allows servicers to quickly see snakes or insects that may be hiding inside.
- Strong rotating hinge won't crack or break when opened in cold weather.



Aegis® Mouse



Black Lid Station Dimensions

5 1/2" long; 4 5/16" wide (including hinge); 1 5/8" high (lid closed); 1 3/8" high (lid open).

Clear Lid Station Dimensions

5 7/16" long; 4 3/8" wide (including hinge); 1 9/16" high (lid closed); 1 15/16" high (lid open).

- Up to twice the bait capacity of most mouse stations.
- Clear lid allows for at-a-glance inspection and reduced service time.
- SecurePoint™ Technology holds blocks or soft bait tight in station.
- Can be mounted both vertically and horizontally; anchoring holes secure the station to floors, walls or pipes.



SoftSecure™ Technology (SST)



- Easy-to-use device that secures soft bait or mini blocks inside the Aegis-RP and Aegis-RP Anchor bait stations.
- Bait is elevated at an optimum feeding angle; keeps bait in place and secure.
- Allows for the removal of the paper pouch. Bait can be placed directly on the SST.



Bait Station Accessories



- Universal Aegis key easily opens all Aegis stations.
- Bait trays make clean-out easy.
- Horizontal or vertical bait rods easily secure bait in stations.



IGI CARBON DIOXIDE

FOR BURROWING RODENTS

Our position as innovators expands beyond industry-leading baits. IGI CO₂ Powered by Liphatech provides an alternative rodent control tool for a PMP's growing arsenal of products. With a quiet, discreet application and approval for use in any outdoor environment, including up against buildings, IGI CO₂ offers versatility that does not compromise on effective control.

LIPHATECH

IGI Carbon Dioxide (CO₂) for Burrowing Rodents

IGI CO₂ provides PMPs with an alternative approach to controlling burrowing rodents. Registered by the EPA as a pesticide, IGI CO₂ is different because it functions only when it is released in a confined space such as in burrowing rodent tunnel structures, where pests succumb to asphyxiation. Each pest has underground burrow or tunnel systems that are different.



- CO₂ gas used to control burrowing rodents can be quietly applied and is non-flammable, invisible and odorless.
- Kills pests including Norway rats, voles, groundhogs, moles, ground squirrels and pocket gophers.*
- Approved for outdoor use only in field settings and in grounds and landscaping next to occupied municipal, residential and commercial buildings.
- IGI CO₂ must be used with The Eliminator® Injection Device or The Eliminator Mini.

Where To Use IGI CO₂ for Burrowing Rodents



System Includes

Eliminator (available with 31" or 18" wand), 25' Gas Hose, Pressure Regulator and Gauge Assembly, Quick Connect Fitting, five (5) Spare Pressure Regulator and Gauge Assembly CO₂ Cylinder Valve Gaskets, Soil Piercing Probe, 16" Flexible Extension Tube and two (2) Cable Ties (cart sold separately)

**Not permitted for use against the following species in California: groundhogs and voles.*

IGI CARBON DIOXIDE

FOR COMMODITY FUMIGATION

Protect a food product's journey at any post-harvest stage with IGI CO₂ Powered by Liphatech. The product fully dissipates with proper venting after the application, is certified for use under the USDA National Organic Program and does not affect the taste of fumigated products, providing effective pest control that leaves nothing behind.



LIPHATECH

IGI Carbon Dioxide (CO₂) for Commodity Insect Fumigation

**CERTIFIED FOR USE IN PEST MANAGEMENT PROGRAMS UNDER
THE USDA NATIONAL ORGANIC PROGRAM.**



Also EPA-registered for the treatment of agricultural commodities against a wide variety of insect pests, IGI CO₂ can be used in organic post-harvest applications. It is not an organic gas, but it is certified for use post-crop harvest to fumigate the producer's crops. Fumigation with IGI CO₂ leaves nothing behind after proper venting, nor does it affect the taste of fumigated product. The active ingredient in IGI is 99.9% CO₂.

- CO₂ gas for insect fumigation can be quietly applied and is non-flammable, invisible and odorless.
- IGI CO₂ can be used in municipal, residential, commercial and field settings, including silos, storages, trucks, trailers, sealed railroad cars and cargo ships.
- With IGI CO₂, treatment hold times vary from 24 hours to 4 days.
- Use a 2-day treatment for killing adult insects and a 4-day treatment for killing all life stages of insects.

Components and accessories needed will vary depending on fumigation site and at the discretion of the licensed fumigator.



At any stage – from storage to transport or processing – commodity fumigation with EPA-approved IGI CO₂ will help protect your investment. Certified for use on organic commodities, IGI CO₂ helps you ensure the integrity of your organic products while reducing gas hold times, with an airtight seal. IGI CO₂ will kill pests – not alter the appearance and taste of your commodities.



50 lb cylinder shown. 100 lb cylinder also available.

INSECT CONTROL

PERITECT 360 IC

Liphatech continues to build on our intelligent solutions with the introduction of innovative insect control. Peritect 360 IC is a laboratory-tested, FIFRA 25(b) exempt product that enables our customers to meet the growing demand for environmentally conscious solutions with the same efficacy they have come to expect from Liphatech products.



LIPHATECH

Peritect Insect Concentrate 360 IC FIFRA 25(b) Exempt

Safe for People, Pets and the Environment*

Peritect 360 IC is a laboratory-tested, FIFRA 25(b) exempt solution that's effective against crawling and flying insects such as bedbugs (adults & nymphs), ants, fleas and mosquitoes. The EPA has determined that FIFRA 25(b) exempt insecticides pose little to no risk to human health or the environment.*



A Minimum Risk Product That Makes Business Sense

Expand your pest control business by offering environmentally conscious customers a FIFRA 25(b) exempt minimum risk insect control product that delivers effective protection for their families, businesses and the environment.* Peritect 360 IC is an easy mixing, liquid concentrate with the active ingredients geraniol, sodium lauryl sulfate, cornmint oil and clove oil.

360° Protection

Full perimeter of defense for indoor/outdoor use*:

- Helps protect children and pets inside the home
- Safeguards surrounding environment of homes and offices
- Defends public spaces with an environmentally conscious solution
- Guards businesses from a wide spectrum of pests and insects

Fully Compliant with 25(b) Standards

Peritect is considered a FIFRA 25(b) minimum risk pesticide because its ingredients pose negligible risk to human health and the environment when used as directed.

Broad Spectrum Insect Control

Peritect 360 IC can be used in fogging and automatic spray systems (except in CT) for active infestations and maintenance of crawling and flying insects:

- Flies
- Fleas
- Spiders
- Bed Bugs (Adult & Nymph)
- Mosquitoes
- Ants
- Cockroaches



**When used as directed.*

A close-up photograph of several bed bugs and their eggs. The bed bugs are brown and segmented, with some showing lighter-colored legs. They are surrounded by numerous small, white, oval-shaped eggs. The background is a soft, out-of-focus brown.

INSECT CONTROL

BUGSCENTS BED BUG MONITORING

Powered by the proven pheromone attractant technology of the BugScents™ lure, this bed bug monitor attracts and traps bugs to empower PMPs with a quick and precise assessment of the level of infestation.

LIPHATECH®

Bed Bug Monitoring System

Slim, Discreet with Flexible Packaging

Designed for discretion, with a compact frame that fits under even a divan-style bed and can be affixed either vertically or horizontally.

Inspired by Insects

Every aspect of this trap has been designed with the insect in mind, including the color, texture, opening size and thigmotactic channels.

Effective

The BugScents Sentry Pro combines a patented attractant and insect-inspired design to lure, trap and effectively detect bed bugs in as little as 24 hours*. It works in the presence and absence of a human host and attracts bed bugs at all levels of infestations.

** Based on simulated bedroom studies. For best results, use in occupied rooms for 24 to 96 hours.*



BugScents Bed Bug Detection Trap



- Textured, dark, undulating surface creates ideal environment for bed bugs.
- Horizontal and vertical installation options allow it to be placed behind a headboard.
- 360-degree entry enables bed bugs to enter from any angle, maximizing catch rate.
- Sixty channels have been specially designed to act like corridors to take advantage of bed bugs' thigmotactic behavior.
- Base of the trap sits flush to the surface to prevent bed bugs crawling underneath and avoiding the glue.



BugScents Bed Bug Attractant



- Detects up to 100% of infestations in the first 24 hours of placement.
- Works up to 3 months, dependent on environmental conditions.
- Intended for the Sentry Pro monitor, but compatible with a wide range of trap types and designs.
- Attracts and detects even a single bed bug before infestations take hold.
- Shelf Life: 2 years unopened at room temperature.
- Uses an industrially biodegradable polymer matrix.
- Targets all adult and nymph stages of bed bugs.



BugScents Glue Boards



- Replaceable glue inserts catch bed bugs on their backs.
- The glue boards should be replaced every 2-3 months or when an infestation is detected.



Disclaimer: If no bed bugs are caught in the trap following the recommended placement duration, this does not guarantee that the room is free from bed bugs. BugScents Sentry Pro is intended as one of the available tools to support the PMP in implementing control measures in accordance with the recommended best practice guidelines for control.

LIPHATECH®

EXPERIENCED *People.* INTELLIGENT *Solutions.*

Our customers use Liphatech products because they work. Liphatech is well-known for our history of innovation, providing pest management professionals with the products and guidance needed to solve their toughest pest problems. Liphatech is a leader that stays ahead of the industry so our customers can too.

liphatech.com

