



A BREAKTHROUGH FOR CONTROLLING BURROWING RODENTS.

- Labeled by the EPA to kill pests in their burrows; including rats, pocket gophers, ground squirrels, groundhogs, voles and moles.
- Product is easy to obtain, assemble and operate.
- Approved for use in municipal, commercial, residential and agricultural settings for rodent control.

IGI CARBON DIOXIDE™
POWERED BY LIPHATECH

WHY SHOULD YOU CONSIDER IGI CO₂ POWERED BY LIPHATECH FOR CONTROLLING BURROWING RODENTS?

IGI CO₂ is an alternative rodent control tool in the PMP's arsenal of products. It is registered by the EPA. In order to be used as a pesticide to control rodents, CO₂ must be registered by the EPA. The use of CO₂ as a pesticide is consistent with the protocols and ideologies of Integrated Pest Management (IPM).

IGI CO₂ is time-saving, easy to order and receive. There's no need to worry about any logistical challenges or driving miles and miles to get the product – IGI CO₂ comes right to you!

IGI CO₂ is different because it functions only when it is released in a confined space such as in burrowing rodent tunnel structures. Only then do the effects of this gas become active and within a very short period of time, pests confined in this space succumb as suffocation occurs. Primary benefits of IGI CO₂ include:

- Approved for use in municipal, residential, commercial and field settings.
- Can be used next to occupied buildings.
- CO₂ gas is non-flammable, invisible and odorless.
- CO₂ does not leave a residue in soil or other spaces.
- Quiet application.
- Certified for use in pest management programs under the USDA National Organic Program.

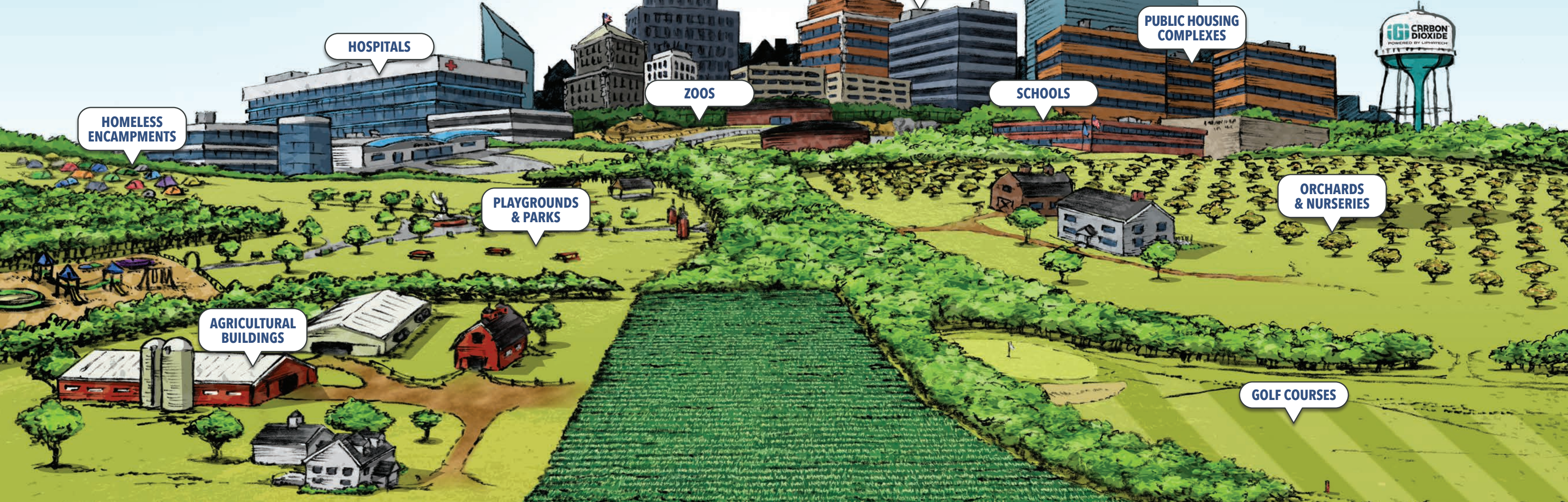
Liphatech is the leading provider of superior and innovative rodent control products. This means that Liphatech brings unmatched technical expertise in solving rodent control problems, especially burrowing rodents.

"We purchased the Eliminator along with IGI Carbon Dioxide powered by Liphatech. We are working to control burrowing rodents in the Skid Row area of Los Angeles. I was a bit skeptical at first. But as we progressed and fine-tuned our application methods, I was ecstatic to witness firsthand just how effective this alternative really is. Not only are we very pleased with the results we are getting by using this alternative for rodent control, we also leave our customers with great peace of mind knowing that all concerns of secondary poisoning have been alleviated."

Michael Hunt, General Manager
Cats USA Pest Control
Los Angeles, CA

WHERE CAN I USE IGI CO₂?

IGI CO₂ is approved for outdoor use only in field settings and in grounds and landscaping around municipal, residential and commercial buildings.



WHAT KINDS OF PESTS CAN I CONTROL WITH IGI CO₂?

This product is used to kill burrowing pests outdoors. Each pest has underground burrow or tunnel systems that are different.



NORWAY RATS

Makes a network of interconnecting tunnels 2 to 3 inches across, up to 1.5 feet deep and 6 feet long. Such a network contains one or more chambers for nesting and feeding, one or more main entrances, and several escape exits.



GROUND SQUIRRELS

Several animals may occupy one burrow, which typically is 3 to 6 inches wide and 5 to 200 feet long. Burrows are generally under logs, trees or rocks when available, otherwise are out in the open with a mound at the main entrance.



GROUNDHOGS

Groundhogs are diggers. They excavate tunnels and burrows underground, in which they live and raise young. The tunnel may have up to five entrances and 50 feet of total tunnel distance, including living and hibernation dens.



POCKET GOPHERS

Makes two kinds of burrows; those near the surface for food gathering and deeper ones for storage and shelter. The passages slant toward the ground surface. Excess soil is pushed out of a passage where it creates a mound. The passage is then plugged from below.



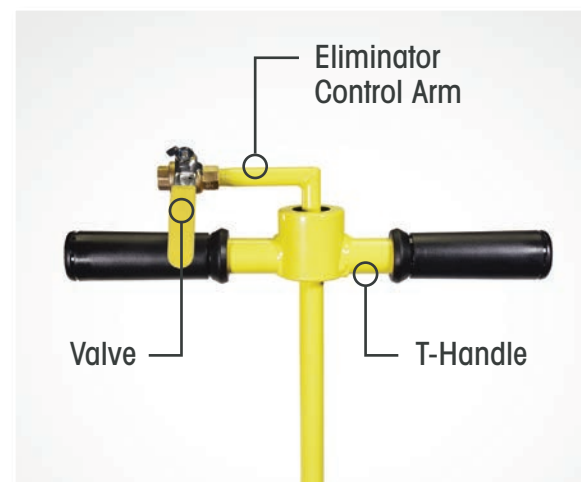
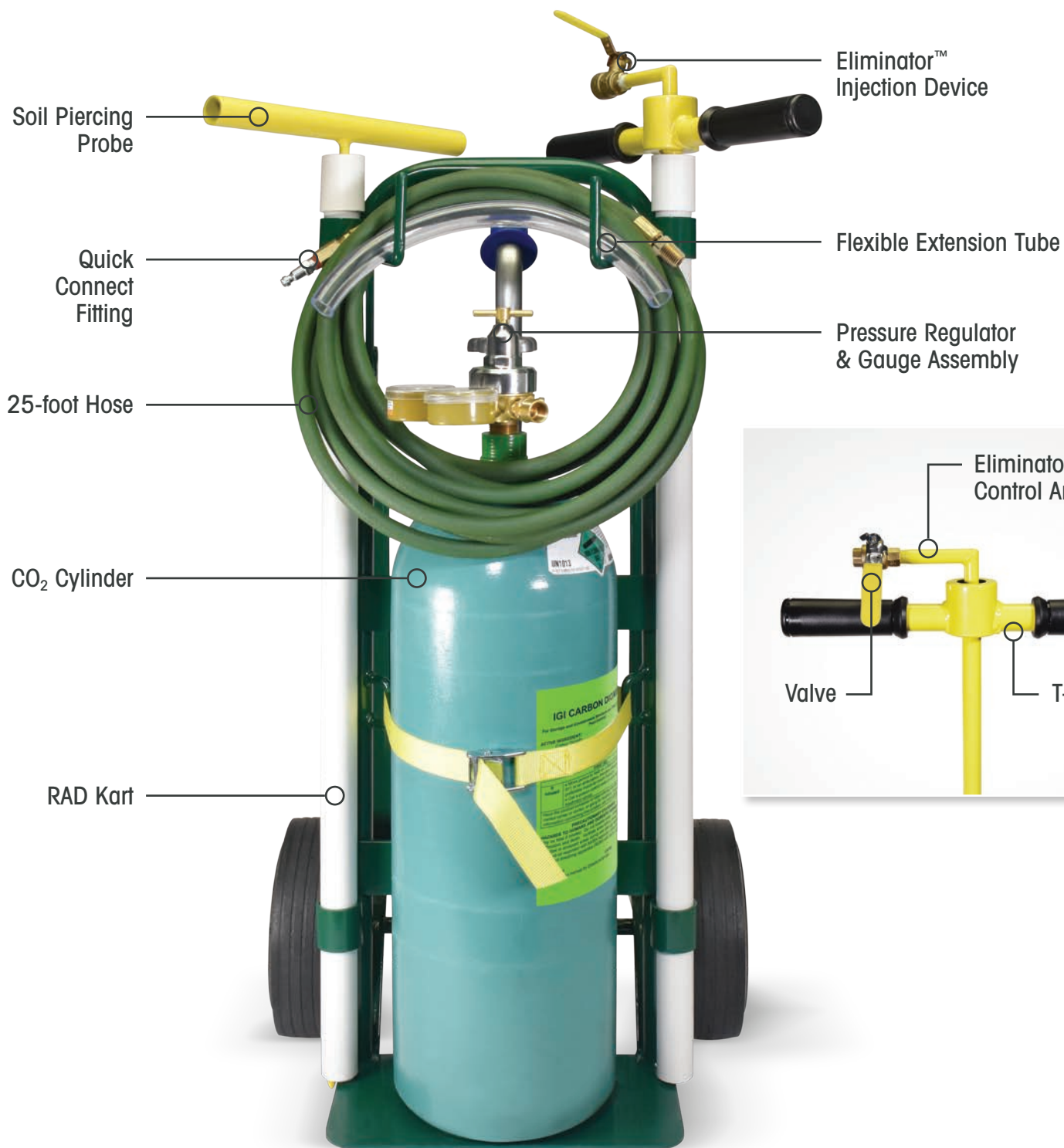
MOLES

Tunnels are two types: subsurface, which appear as ridges; and deep, which are generally marked by cone shaped molehills usually 6 to 8 inches in height. Can travel through porous soil at 1 foot per minute.



VOLES

Construct many tunnels and surface runways with numerous burrow entrances. Vole nests are globular structures of dry grass about 6 to 8 inches in diameter and may contain several adults and young. Pine voles remain entirely underground, building extensive tunnel systems and pushing conical piles of soil to the surface.



IGI CARBON DIOXIDE™
POWERED BY LIPHATECH

NEED MORE INFORMATION?

For more information on IGI CO₂ Powered by Liphatech, contact your Liphatech Sales Representative, visit Liphatech.com/IGICO2, or call Customer Service at 888-331-7900.



GET STARTED!

IGI CO₂ Powered by Liphatech is sold through:



www.cardinalproproducts.com

West	Midwest, East
800-548-2223	217-330-6119