

FAQ

Frequently Asked Questions About Soft Bait



The Soft Bait Innovators®

CONTENTS

Overview	1	Will it stain?	8
Usage	2	Will it hold up outdoors for 30 days?	8
Can I use soft baits for both rats and mice? ...	2	Does it attract slugs, snails, or insects?	8
Are there restrictions on the species that soft bait can be used to control?	2	Will the pouches get stuck together?	8
When should I use soft bait?	2	How often should I clean a station?	8
How much do I use?	2	What do I do with the paper when placing soft bait in SoftSecure Technology?	8
When should I expect to see results from soft bait?	3	Bait Station Security	9
Why is there such a large range listed for the number of pouches to use in a bait station?	3	Will it work in a mouse station?	9
What Personal Protective Equipment (PPE) is required for application?	3	Will it stay attached to the rod?	9
Does it work for burrow baiting?	3	Can I now only use the Aegis-RP in the flat position?	9
Where is it available?	3	What about rats transferring the bait away from the station?	9
Product Packaging	4	What can I do if paper shreds are a problem?	9
How many pouches are in a pail?	4	Are there options, other than rods, to secure bait in stations?	9
How much bait is in a pouch?	4	Choosing the Right Soft Bait	10
Is this a place pack?	5	How are FirstStrike, Resolv, TakeDown and Flatline different from each other?	10
Can I remove the bait from the pouch?	5	How are Liphatech soft baits different from other rodenticides?	10
Will rodents eat more than a lethal dose?	5	What active ingredients are in soft bait?	11
Can I add 'enhancers' to rodenticides?	5	Miscellaneous	12
Unique Soft Bait Characteristics	6	Where is Liphatech soft bait made?	12
Why is there an oily residue?	6	Is soft bait a "magic" bait?	12
Does the oily residue on the outside of the pouches contain active ingredient?	6	Do rats and mice need gnawing surfaces?	12
Does it have an odor?	6	Is Canadian soft bait and United States soft bait the same?	12
What happens to the packaging material? ...	6	What issues should I be aware of when using soft bait?	12
What is the active ingredient?	6	Where can I get more information on soft bait?	12
Does it contain any allergens?	6		
Environmental Factors	7		
Will our soft baits turn rancid?	7		
How will freezing temperatures affect our soft baits?	7		
What happens when it is exposed to water? ...	7		
Will it mold?	7		
Will soft bait melt?	7		

OVERVIEW

Liphatech, The Soft Bait Innovators[®], is a leader in the manufacturing and marketing of soft bait rodenticides. Liphatech offers four soft baits: FirstStrike[®], Resolv[®], TakeDown[®] and Flatline[™]. As a leader, Liphatech developed three of the rodent control industry's active ingredients – chlorophacinone and bromadiolone, as well as difethialone – a Liphatech exclusive. These active ingredients can be found in our soft baits.

We've created this guide to answer your soft bait questions and ensure that you are well-informed when it comes to this important tool for your rodent control efforts. To best address the needs of PMPs, each section is formatted with frequently asked questions and their answers. Read the guide in its entirety or use the table of contents to locate a specific area of interest you may have.

We hope this guide gives you the information necessary to make sound decisions as you incorporate the next level of rodenticide technology into your pest control strategy.



NOTE: FirstStrike and Resolv soft baits are approved for use in Canada and the United States. However, when used in Canada, all soft bait must remain in the pouch. Any references to the removal of the pouch only apply to the use of soft bait in the United States. In addition, only the FirstStrike 10 gram and Resolv 12 gram sizes are available in Canada. TakeDown and Flatline soft baits are not approved for use in Canada.

USAGE

Can I use soft baits for both rats and mice?

Yes. Testing demonstrates that Liphatech soft baits deliver control for Norway rats, roof rats and house mice. You may see rodent death starting 4-5 days after the consumption of a lethal dose when using FirstStrike or Resolv. For TakeDown, it may take 2 or more days for the first dead rodents to appear after consuming a lethal dose. Each rodenticide can deliver a lethal dose in a single night's feeding. In the United States (excluding California) labeling allows for use on several additional species: cotton rats, Eastern harvest mice, golden mice, Polynesian rats, meadow voles, white-throated woodrats, Southern plains woodrats and Mexican woodrats. Always follow the label that comes on the product you are using.

Are there restrictions on the species that soft bait can be used to control?

Soft bait is labeled for use on Norway rats, roof rats and house mice, as well as several other species in the United States. However, California prohibits the use of soft bait against cotton rats, Eastern harvest mice, golden mice, Polynesian rats, meadow voles, white-throated woodrats, Southern plains woodrats and Mexican woodrats. Always follow the label on the product you are using.

When should I use soft bait?

Due to the versatility of soft bait, it can become your everyday baiting solution. Soft bait, especially FirstStrike or TakeDown, is great for reducing infestations and for accounts that have lingering rodents. Resolv provides budget-conscious accounts with results while Flatline is the best choice for everyday use – during light to heavy rodent activity. An additional benefit of soft bait is that it maintains its integrity in hot environments.

How much do I use?

Refer to the label for proper application directions, use and restrictions. These are the number of pouches to use:

Product	Pouch Size	House Mice	Rats
FIRST STRIKE	10g	1-4 pouches per placement Usually spaced 8-12 feet apart	9-43 pouches per placement Usually spaced 15-30 feet apart
FIRST STRIKE	40g	1 pouch per placement Usually spaced 8-12 feet apart	2-11 pouches per placement Usually spaced 15-30 feet apart
RESOLV	12g	1-4 pouches per placement Usually spaced 8-12 feet apart	7-36 pouches per placement Usually spaced 15-30 feet apart
RESOLV	40g	1 pouch per placement Usually spaced 8-12 feet apart	2-11 pouches per placement Usually spaced 15-30 feet apart
TAKE DOWN	8g	1-4 pouches per placement Usually spaced 8-12 feet apart	4-24 pouches per placement Usually spaced 15-30 feet apart
FLATLINE	28g	1-2 pouches per placement Usually spaced 8-12 feet apart	3-16 pouches per placement Usually spaced 15-30 feet apart

When should I expect to see results from soft bait?

According to the label, results in reducing the rodent population from second-generation anticoagulant rodenticides like FirstStrike and Resolv should start to appear in about 4 to 5 days; results for bromethalin rodenticides like TakeDown may take two or more days to appear after rodents consume a lethal dose. For Flatline, a first-generation anticoagulant rodenticide, multiple feedings will be necessary. Actual results may vary based on consumption and size of rodent population.

Why is there such a large range listed for the number of pouches to use in a bait station?

The EPA stipulates what amounts to use based on the target animal as well as the active ingredient. The rodenticide manufacturer doesn't determine these amounts. Total weight ranges for Liphatech's soft baits are comparable to those of traditional wax-based block baits. For example, the amount allowed per placement for FirstStrike is similar to that of Generation[®] blocks; the amount allowed per placement for Resolv is similar to that of any wax-based bromadiolone block.

What Personal Protective Equipment (PPE) is required for application?

As mandated by the EPA, the label specifies the use of waterproof gloves, long pants, shoes and socks when handling rodenticides and dead animals such as rodents.

Does it work for burrow baiting?

The EPA prohibits soft bait use in burrows so use a bulk pellet or meal bait for those applications. We highly recommend Maki[®] Bulk Pellets or Generation Bulk Pellets for Norway rat burrow baiting. They are paraffinized to tolerate the moist environment of a burrow and are seldom kicked out of burrows by rats. We know of no other manufacturer that produces paraffinized pellets. Another good option for burrow baiting, with little potential of being kicked out, is BlueMax[™] meal.







Where is it available?

FirstStrike and Resolv are registered and available in the United States and Canada. At the time of this printing, only FirstStrike 10 gram and Resolv 12 gram are available in Canada. These, in addition to the 40 gram sizes, are available in the United States. TakeDown and Flatline are registered and available in the United States in 8 gram and 28 gram pouches, respectively.

PRODUCT PACKAGING

How many pouches are in a pail?

See the table below for specifics. Pails are filled and sold by weight and not by the number of pouches. FirstStrike 4 lb. bags and 8 lb. pails are available, but per EPA regulations cannot be sold individually; they are only available in a case quantity (4-4 lb. bags or 2-8 lb. pails per case). The same applies to Resolv 4 lb. bags. TakeDown and Flatline can be sold in 4 lb. individual bags, because they are not second-generation anticoagulant rodenticides.

Product	Pouch Size	4 lb. Bag	8 lb. Pail	16 lb. Pail
	10g	182 pouches	363 pouches	726 pouches
	40g	Not Available	Not Available	182 pouches with 5 SSTs
	12g	151 pouches	Not Available	604 pouches
	40g	Not Available	Not Available	182 pouches with 5 SSTs
	8g	227 pouches	Not Available	Not Available
	28g	65 pouches	Not Available	Not Available

How much bait is in a pouch?

FirstStrike soft bait comes in 10 gram (0.35 oz.) and 40 gram (1.41 oz.) pouches. Resolv soft bait comes in 12 gram (0.42 oz.) and 40 gram (1.41 oz.) pouches. TakeDown soft bait comes in 8 gram (0.28 oz.) pouches. Flatline soft bait comes in 28 gram (1 oz.) pouches.

Is this a place pack?

No – it is soft bait. Soft bait is the next evolution in rodenticide formulations. We recommend using soft bait like a mini block. It is easy to secure on horizontal or vertical rods or in a SoftSecure™ Technology feeding device in a tamper resistant bait station. It is also easy to secure on a length of wire so it can be placed in an inaccessible void and recovered later. It is labeled to be used in either manner.



Liquid Bait

Tracking Powder

Bulk Pellets

Bulk Meal

Pellet Place Packs

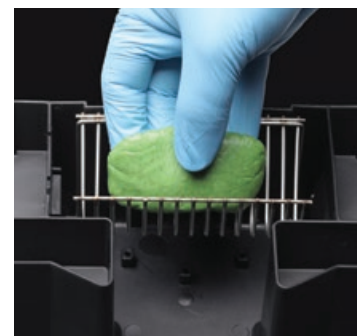
Molded Blocks

Extruded Blocks

Soft Bait

Can I remove the bait from the pouch?

Yes, labeling for soft bait in the United States allows the removal of bait from the pouch and placement in a feeding device such as SoftSecure Technology (SST) that secures the unwrapped bait in the station. SST is an excellent way to secure unwrapped soft bait. Wrappers should be discarded in the trash. Soft bait must remain in the pouch when used in Canada.



Will rodents eat more than a lethal dose?

Rodents may continue feeding on any rodenticide after consuming a minimum lethal dose. Palatable baits like FirstStrike, Resolv or Flatline may lead to some overconsumption. But they won't survive to do it more than once. TakeDown delivers a stop-feed action, where rodents typically feed less or cease feeding altogether after consuming a toxic dose.

Can I add 'enhancers' to rodenticides?

You cannot add 'enhancers' like peanut butter, vanilla, etc. directly to any rodenticide. The EPA considers this formulating the product, which only a manufacturer can do. But with the palatability of our soft baits, there is no reason to do so!



UNIQUE SOFT BAIT CHARACTERISTICS

Why is there an oily residue?

Our soft bait products contain a number of inert ingredients in addition to the active ingredients. One of these inert ingredients is used to bind all the ingredients together, causing the soft baits to produce a bit of oily residue that seeps through the porous paper.

Does the oily residue on the outside of the pouches contain active ingredient?

The oil does contain small amounts of the active ingredient. As with all rodenticides, you should follow label instructions and use waterproof gloves for handling.

Does it have an odor?

The soft bait products have a grain-like aroma that rodents may be able to detect.

What happens to the packaging material?

In our experience, rodents feed on pouches as they do with pellet and meal place packs. Mice tend to chew a hole in the pouch and feed while rats prefer to shred the paper. We have observed rodents using the soft bait paper for nesting material after the bait is gone. With the SoftSecure Technology feeding device, you now have an option to use soft bait without the paper pouch. Soft bait must remain in the pouch when used in Canada.

What is the active ingredient?

FirstStrike contains the second-generation active ingredient difethialone. This is a Liphatech exclusive. Generation and BlueMax rodenticides also use difethialone. It is formulated at .0025%. Resolv uses the most common second-generation anticoagulant: bromadiolone. Both active ingredients were invented by Liphatech. TakeDown uses bromethalin, a non-anticoagulant rodenticide which attacks the central nervous system. Flatline is a first-generation anticoagulant containing chlorophacinone.

Does it contain any allergens?

Of the eight most common ingredients that trigger food allergies as defined by the FDA, Liphatech soft bait contains two: soy and wheat. Our soft bait has no milk, eggs, peanuts, tree nuts, fish or shellfish as ingredients. The products are manufactured in machinery that does not process products containing nut ingredients.

ENVIRONMENTAL FACTORS

Will our soft baits turn rancid?

The raw materials used in our soft baits were chosen in order to avoid rancidness. In addition, specific additives are used to slow the process of spoiling.

How will freezing temperatures affect our soft baits?

Since the products will get noticeably harder, we recommend applying soft bait by cupping the pouch in one hand. Use your other hand to hold a horizontal rod and then gently pierce the soft bait with the rod, or support the center of the pouch with your thumb while pressing it down onto a vertical rod. Or, simply place the soft bait in a SoftSecure Technology (SST) device and rodents will feed between the bars.



What happens when it is exposed to water?

The pouch keeps the product intact so it does not separate. As long as the pouch is intact, it can withstand prolonged submersion in water. Using a horizontal rod or SST will elevate the bait and keep it drier.

Will it mold?

You may experience mold similar to most block type rodenticides, typically in environments with high humidity. However, you may find that the rodents will eat the bait long before that. The frequency of your visits to check on bait vary based on the infestation level, but do check on the product regularly. If you will only be making widely spaced visits, you may want to use 40 gram FirstStrike or Resolv. They offer the same palatability and performance as the 10 and 12 gram pouches, but in a larger size. BlueMax, a rodenticide that has the same active ingredient as FirstStrike, but has three preservatives to give you added mold protection, is also a good choice.

Will soft bait melt?

Soft bait maintains its palatability and integrity in hot environments. You can even use horizontal bait rods and have no trouble with the bait falling off.

Will it stain?

We have not found it to stain bait stations, but we recommend using this product like a block. Do not place it directly onto surfaces where it may stain.

Will it hold up outdoors for 30 days?

As with block type rodenticides, it depends on factors such as the weather and rodent feeding. In field tests, intact pouches have held up outdoors in tamper resistant bait stations for over six months, but we recommend replacing rodenticide more often. Soft bait may need to be restocked at each visit as rodents will have consumed it.

Does it attract slugs, snails, or insects?

The soft bait pouch's protective paper wrapper does offer some shielding against attacks by insects and slugs/snails, but some insects may be able to chew through the paper.

Will the pouches get stuck together?

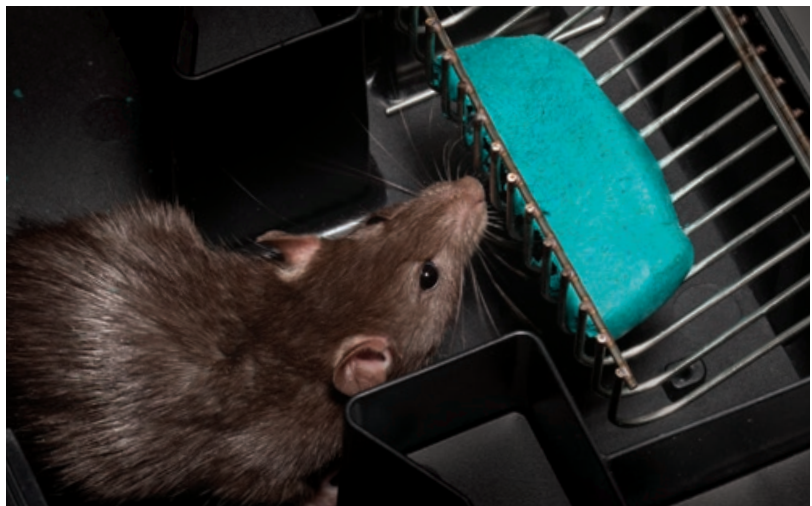
Even after exposure to heat near 100° F (38° C) for a month, pouches in a bucket did not stick together. When subjected to sub-zero temperatures, we have noticed a slight tendency for the pouches to stick lightly to one another, but they can easily be separated.

How often should I clean a station?

Regardless of the rodenticide used, you should monitor, and as necessary, clean the station. Take measures to remove small pieces of product, if needed.

What do I do with the paper when placing soft bait in SoftSecure Technology?

The Liphatech soft bait labels allow the empty wrapper to be discarded in the trash. Soft bait must remain in the pouch when used in Canada.



BAIT STATION SECURITY

Will it work in a mouse station?

Absolutely. It works well and is easy to use in both mouse and rat stations. In fact, Aegis® mouse stations are great for using soft bait because they have SecurePoint™ Technology. SecurePoint keeps the soft bait securely in place inside the mouse station. Place the needed quantity in the station and you are all set. Even just one soft bait pouch fits snugly in a mouse station.

Will it stay attached to the rod?

Yes. It will stay securely attached when skewered to either horizontal or vertical rods.

Can I now only use the Aegis®-RP in the flat position?

No. You can still take advantage of the flexibility of positioning the RP in the vertical or horizontal positions. Besides a smaller footprint, it also helps keep the bait off the ground.

What about rats transferring the bait away from the station?

Translocation by rodents does occur, so make sure that the soft bait pouch is securely affixed in the bait station. Do not place bait stations in locations where partially eaten pouches could be removed from the bait station and become accessible. Check the area around bait stations for removed pouches, and if it does occur, take steps to prevent it. Liphatech salespeople and technicians can help troubleshoot issues like this.

What can I do if paper shreds are a problem?

All Liphatech soft bait sold in the United States is labeled to allow removal of the paper pouch. Bait can be placed directly on SoftSecure Technology (SST). Soft bait must remain in the pouch when used in Canada.

Are there options, other than rods, to secure bait in stations?

Yes. Liphatech's SST is a rodenticide placement device specifically designed for soft bait. Snap the device into a bait station, place the bait on the basket and close the lid. Rodents will feed between the bars. SST is designed for the Aegis line of bait stations, but is compatible with many others.



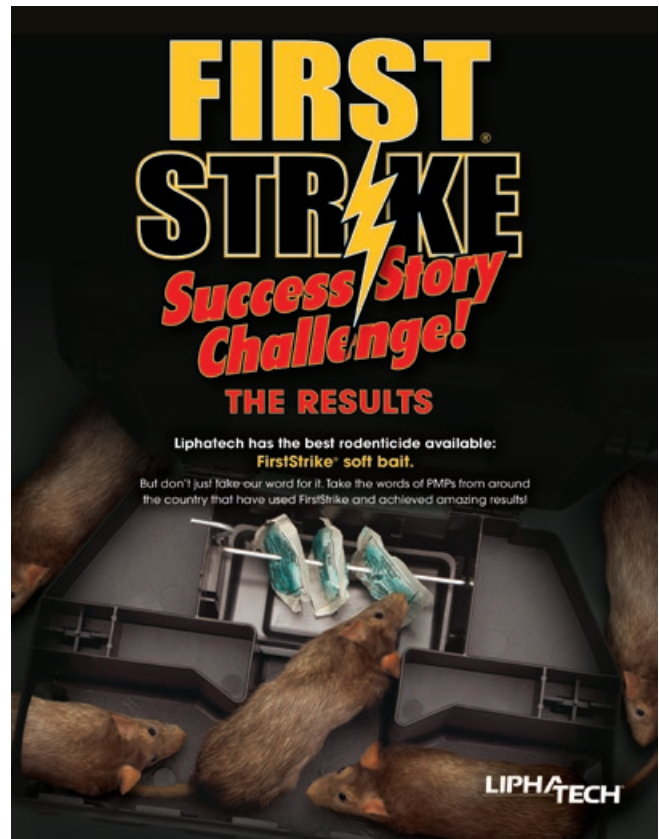
CHOOSING THE RIGHT SOFT BAIT

How are FirstStrike, Resolv, TakeDown and Flatline different from each other?

FirstStrike, Resolv, TakeDown and Flatline contain active ingredients difethialone, bromadiolone, bromethalin and chlorophacinone respectively. Each of these Liphatech soft baits are specifically formulated to control both rats and mice and each soft bait has key features and benefits designed for various levels of rodent activity and environmental conditions. FirstStrike contains difethialone and is a palatable soft bait rodenticide for the quality-minded PMP. Each FirstStrike soft bait pouch is 10 grams (0.35 oz.). Resolv contains bromadiolone and is an everyday baiting solution for budget-minded accounts. Every Resolv pouch is 12 grams (0.42 oz.). Since FirstStrike and Resolv come in smaller unit sizes, they are perfect for minimizing the amount of bait used when maintenance baiting. TakeDown is designed for heavy infestations and contains bromethalin. Every TakeDown pouch is smaller at 8 grams (0.28 oz.) because it is an acute rodenticide and is formulated at 100ppm. Flatline is a multiple-feed soft bait rodenticide for everyday use. It contains chlorophacinone, a first-generation anticoagulant that comes in 28 gram (1 oz.) pouches. All Liphatech soft baits maintain their integrity in hot environments.

How are Liphatech soft baits different from other rodenticides?









Read what others have to say about FirstStrike in our Success Story booklet. Or, take the Soft Bait Challenge yourself. On your next new account, try our soft bait. We're confident that you'll see that our soft baits offer palatability and performance. To find out for yourself which bait works best for you, see our technical bulletin, *Using Rodenticide Field Comparison to Advantage*, at liphatech.com.



Frequently Asked Questions About Liphatech Soft Bait

What active ingredients are in soft bait?

Different brands have different active ingredients and different formulations. Here is a list of soft baits.

Product	Active Ingredient (AI)	% AI	Manufacturer	Country of Origin
	difethialone	.0025%		USA
	bromadiolone	.005%		USA
	bromethalin	.010%		USA
	chlorophacinone	.005%		USA
Brigand	bromadiolone	.005%	PelGar International Ltd.	UK
EZ Soft	bromadiolone	.005%	PelGar International Ltd. for VM Products	UK
Ratimor	bromadiolone	.005%	Unichem d.o.o.	Slovenia
Rodenthor	bromadiolone	.005%	Ensystem, Inc.	USA
Final	brodifacoum	.0025%	Bell Laboratories	USA
Contrac	bromadiolone	.005%	Bell Laboratories	USA

MISCELLANEOUS

Where is Liphatech soft bait made?

All of our soft baits are made at the Liphatech, Inc. headquarters in Milwaukee, WI. Due to the highly complicated and unique process, the methods behind making Liphatech soft bait are a trade secret. There are other soft baits available now, but only FirstStrike, Resolv, TakeDown and Flatline are from The Soft Bait Innovators[®].

Is soft bait a “magic” bait?

Liphatech soft baits are effective rodenticides. However, they are no substitute for proper rodent control practices. For more information on rodent management practices, consult our website, liphatech.com, to access videos, technical bulletins, literature and other helpful resources. Liphatech salespeople and technicians can also help you troubleshoot issues.

Do rats and mice need gnawing surfaces?

Rats and mice seem to like food sources on which they can get a tooth hold. They have no trouble getting started on soft bait.

Is Canadian soft bait and United States soft bait the same?

Although the formulations are the same, there are different packaging and different labeling requirements for the United States and Canada. For example, the Canadian Pest Management Regulatory Agency (PMRA) restricts the FirstStrike label to “indoor only.” Resolv is approved for both inside and outside use in Canada. TakeDown and Flatline are not approved for use in Canada. Also, soft bait must remain in the pouch when used in Canada.

What issues should I be aware of when using soft bait?

When you switch to Liphatech soft bait, you may find that you will get more feeding than before. In fact, we’ve heard from people that when they switched bait at an account they thought had no activity, they found out they had a rodent problem after all. Be sure to put out enough bait within the amounts allowed by the label, especially when servicing a new account or during a cleanout. You can’t kill rodents if there isn’t any bait left. The larger FirstStrike and Resolv 40 gram soft baits can help in this situation. We also recommend more frequent visits in the beginning at a new account and/or when there is an infestation.

Where can I get more information on soft bait?

[Liphatech.com](http://liphatech.com) has more information on Liphatech soft baits, including information sheets, soft bait success stories, videos, safety data sheets and labels.



LIPHATECH PROFESSIONAL SOFT BAIT PRODUCTS

FirstStrike®

A palatable soft bait rodenticide for the quality-minded PMP.

- Contains difethialone (25 ppm), a second-generation anticoagulant; vitamin K₁ is the antidote.
- Maintains integrity in hot environments.
- Formula is palatable to rats and mice.



Resolv®

An everyday baiting solution for budget-minded accounts.

- Contains bromadiolone (50 ppm), a second-generation anticoagulant; vitamin K₁ is the antidote.
- Maintains integrity in hot environments.
- Formula is palatable to rats and mice.



TakeDown®

Designed for heavy infestations, TakeDown combines the power of an acute rodenticide with the palatability of soft bait.

- Contains bromethalin (100 ppm), an acute rodenticide.
- Maintains integrity in hot environments.



Flatline™

The first and only multiple-feed soft bait rodenticide for everyday use.*

- Contains chlorophacinone (50 ppm), a first-generation anticoagulant; vitamin K₁ is the antidote.
- Maintains integrity in hot environments.
- Formula is palatable to rats and mice.

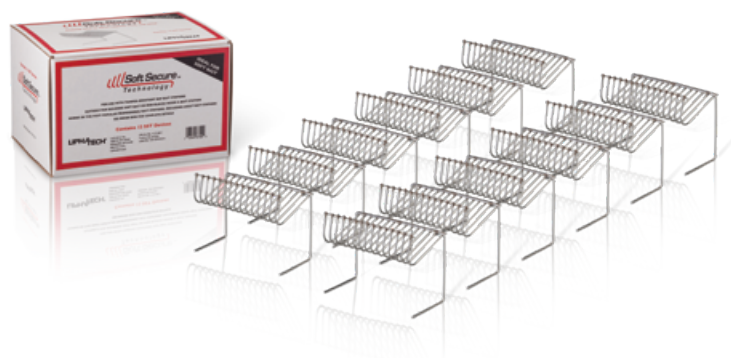
*Not registered for sale in all states yet.



SoftSecure™ Technology (SST)

A rodenticide placement device specifically designed for soft bait allowing for faster servicing and the use of soft bait without paper.

- Snaps into bait station — no rods needed.
- Can use soft bait or traditional block rodenticide.
- Works with most bait stations, including the Aegis®-RP.



Our Pest Management Mission

Liphatech, Inc. creates successful partnerships with pest management professionals by offering superior and innovative rodent control products. We strive to consistently provide outstanding and fast customer service to assist PMPs in improving the quality of human life.

Industry-Leading Rodent Control Solutions

Finding the most effective and efficient solutions for the world's rodent control problems — and helping its customers succeed — has made Liphatech the industry leader.

No matter how complex or challenging a rodent control problem may be, pest management professionals have come to rely on the quality, innovation and expertise of Liphatech.

Throughout its history, Liphatech has focused exclusively on the development and production of rodenticides and related rodent control products. The result? The industry's most advanced technology, along with a powerful commitment to deliver the highest levels of customer service and technical support. Bolstered by ongoing research, our innovations have consistently set the standard for the rodent control industry.

Trade names mentioned in this publication:

FirstStrike®, Resolv®, TakeDown®, Generation®, Maki®, Aegis®, and Aegis®-RP are registered trademarks of Liphatech, Inc. (Milwaukee, WI).

Flatline™, SoffSecure™ Technology, and BlueMax™ are trademarks of Liphatech, Inc. (Milwaukee, WI).

Conrac® and Final® are registered trademarks of Bell Laboratories/Motomco (Madison, WI).

Brigand™ is a trademark of PelGar International Ltd. (UK).

EZ Soff™ is a trademark of VM Products (Bedford, TX).

Ratimor® is a registered trademark of Unichem d.o.o. (Slovenia).

Rodenthor® is a registered trademark of Ensystem, Inc. (Fayetteville, NC).

NOTE: At the time of this printing all information was deemed accurate and reliable.



Liphatech, Inc.
3600 W. Elm Street
Milwaukee, WI 53209
1-888-331-7900
www.liphatech.com

Revised: 01/2020