

# LIPHA<sup>TECH</sup>

EXPERIENCED *People.* INTELLIGENT *Solutions.*

## PRODUCT GUIDE

# EXPERIENCED *People.*

Experienced people make the difference at Liphatech. With over 150 years of technical pest management experience, all members of the Liphatech team work together to provide intelligent pest management solutions. The substantial tenures of our technical experts equate to some of the most elevated product knowledge and customer service found in the pest management industry today. Along with guidance and strategies for integrated pest management (IPM), they can help you determine the best solution for your pest challenges.



# INTELLIGENT *Solutions.*

Liphatech brought the future to pest management with innovation and chemistry, developing the first soft bait rodenticides and three of the industry's active ingredients – chlorophacinone and bromadiolone, as well as difethialone – a Liphatech exclusive.

Today, we offer a diversified portfolio of products and strategies for a variety of pests and environments to help pest management professionals (PMPs) remain responsible and profitable.



## LIPHATECH MILESTONES

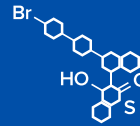
**rozol®** 1967

Invents chlorophacinone, its first multi-feed anticoagulant

1976



Invents its original second-generation anticoagulant, bromadiolone



1988

Invents difethialone, a second-generation anticoagulant

1995



Introduces whole grains with difethialone

AEGIS® 2000

Introduces Aegis bait station line

2005

**BlueMax™**

Begins using mold inhibitors with difethialone

**FIRST STRIKE**

2008

Launches first soft bait (difethialone)

2010



Launches preassembled weighted bait station

**RESOLV**

2012

Launches bromadiolone soft bait

2016



Introduces first bromethalin soft bait for the professional market (originally registered as TakeDown)

**FLATLINE**

2020

Launches first chlorophacinone soft bait for the professional market

**NoTox™**

2021

Creates NoTox family of soft bait and mini block attractants

2021



Acquires alternative control for burrowing rodents and fumigation of insects

RODENT CONTROL

# SOFT BAITS

We are The Soft Bait Innovators<sup>®</sup>. With a variety of active ingredient formulations to solve your everyday or tough rodent challenges, Liphatech's industry-leading soft bait rodenticides are labeled for the control of Norway rats, roof rats, house mice and other rodent species. Each Liphatech soft bait is palatable and maintains its integrity in hot environments. In fact, palatability and integrity are the hallmarks of these baits, each with a bait matrix that rodents will eat.



LIPHATECH<sup>®</sup>

## FirstStrike®



### 10g pouch

- Case of 4-4 lb. bags (182 pouches/bag)
- Case of 2-8 lb. pails (363 pouches/pail)
- 16 lb. pail (726 pouches)

### 40g pouch

- 16 lb. pail (182 pouches)

- Liphatech-exclusive active ingredient: difethialone (25 ppm); Vitamin K<sub>1</sub> is the antidote.
- An excellent choice for clean-out, lingering rodents or heavy infestations.
- Maintains integrity in hot environments.
- Easy to place securely on bait station rods and on the SST feeding device.



## Resolv®



### 12g pouch

- Case of 4-4 lb. bags (151 pouches/bag)
- 16 lb. pail (604 pouches)

### 40g pouch

- 16 lb. pail (182 pouches)

- Active ingredient: bromadiolone (50 ppm); Vitamin K<sub>1</sub> is the antidote.
- An excellent choice for the budget-minded PMP faced with moderate rodent infestations.
- Maintains integrity in hot environments.
- Easy to place securely on bait station rods and on the SST feeding device.



## Flatline®



### 28g pouch

- 4 lb. bag (65 pouches)
- Case of 8-4 lb. bags (65 pouches/bag)
- 16 lb. pail (253 pouches)

- Active ingredient: chlorophacinone (50 ppm); Vitamin K<sub>1</sub> is the antidote.
- First and only chlorophacinone soft bait rodenticide for the professional market.
- Multiple-feed anticoagulant rodenticide.
- Best choice for everyday use to help stop damage caused by rodents.



## TakeDown® II



### 8g pouch

- 4 lb. bag (227 pouches)
- Case of 4-4 lb. bags (227 pouches/bag)

- Active ingredient: bromethalin (100 ppm).
- An acute rodenticide for the professional pest control market.
- Provides faster results than anticoagulant rodenticides.
- Effective in fighting anticoagulant-resistant rodent populations, especially those in commercial settings.



## NoTox™



### 10g pouch

- 1 lb. bag (45 pouches)
- Case of 8-1 lb. bags (45 pouches/bag)

- Soft bait attractant with no active ingredient. Poses no danger to rodent predators or other curious animals.
- Attract rodents, nuisance animals and pests with a nontoxic formulation designed to monitor activity.
- Bait can be removed from pouch for flexible application and can be used with snap traps, glue boards, bait stations and live catch traps.
- Highly attractive even when competing food is available.



RODENT CONTROL

# MINI BLOCKS

Since Liphatech introduced Generation® mini blocks over 30 years ago, PMPs have come to rely on Generation and Liphatech's growing family of mini blocks for solid choices and solutions to effectively control rodent species, including mice, Norway rats and roof rats, amidst a variety of infestation scenarios. Each Liphatech mini block is designed with rodent gnawing edges and a center hole for holding securely in bait stations. However, each product in the block family has its own unique benefits.

LIPHATECH®

# Generation®



## 20g block size

- 16 lb. pail (363 blocks)
- Case of 4-4 lb. bags (90 blocks/bag)

- Liphatech-exclusive active ingredient: difethialone (25 ppm); Vitamin K<sub>1</sub> is the antidote.
- Effective and palatable for rats and mice.
- Designed with rodent gnawing edges and a center hole for securing in bait stations.
- Easy to place securely on horizontal and vertical bait station rods.



# BlueMax™



## 20g block size

- 16 lb. pail (363 blocks)

- Liphatech-exclusive active ingredient: difethialone (25 ppm), Vitamin K<sub>1</sub> is the antidote.
- An ideal maintenance rodenticide for audited accounts and where crumbs and scatter are a concern.
- Contains preservatives as mold inhibitors.
- Blue marker dye can be seen in droppings.
- Ideal for placement in humid, high-moisture conditions.



# Maki®



## 1 oz. block size

- 16 lb. pail (256 blocks)

- Active ingredient: bromadiolone (50 ppm), Vitamin K<sub>1</sub> is the antidote.
- Attractive to Norway rats, roof rats and house mice.
- Designed with rodent gnawing edges and a center hole for securing on vertical or horizontal rods.
- Works well where moisture is a concern.
- Can be placed in bait stations either indoors or outdoors.



# TakeDown® II



## 14g block size

- 4 lb. bag (128 blocks)
- Case of 4-4 lb. bags (128 blocks/bag)

- Active ingredient: bromethalin (100 ppm).
- An acute rodenticide for the professional pest control market.
- Provides faster results than anticoagulant rodenticides and is effective in fighting anticoagulant-resistant rodent populations, especially those in commercial settings.
- Designed with rodent gnawing edges and a center hole for securing on vertical or horizontal rods.

*TakeDown II Mini Blocks are registered in all states except Hawaii and Maine.*



# NoTox™



## 20g block size

- 10 lb. pail (227 blocks/pail)

- Mini block attractant with no active ingredient.
- Attract rodents, nuisance animals and pests with a nontoxic formulation designed to monitor activity.
- Poses no danger to rodent predators or other curious animals.



RODENT CONTROL

# MORE BAIT OPTIONS

In addition to leading soft baits and mini blocks, Liphatech also offers PMPs bait options for added versatility, hard-to-reach areas, or where moisture is a concern. These formulations include pellets, pellet place packs, meal bait and paraffin blocks.



LIPHATECH



# Generation<sup>®</sup>



## Bulk Pellets

- 20 lb. pail

- Liphatech-exclusive active ingredient: difethialone (25 ppm); Vitamin K<sub>1</sub> is the antidote.
- Labeled for burrow baiting; pellet shape mimics seeds in rodents' environment.
- Added paraffin provides moisture tolerance.



## Pellet Place Packs

### 25g place pack

- Case of 4 pails (100 packs/pail)

- Liphatech-exclusive active ingredient: difethialone (25 ppm); Vitamin K<sub>1</sub> is the antidote.
- Ideal for proper placement in hard-to-reach baiting locations.
- Paraffinized formula works well where moisture is a concern.
- Special place pack film keeps pellets fresh until consumed by rodents.

# BlueMax<sup>™</sup>



## Meal Bait

- 18 lb. pail

- Liphatech-exclusive active ingredient: difethialone (25 ppm), Vitamin K<sub>1</sub> is the antidote.
- Labeled for burrow baiting of rats and mice in areas where non-targets cannot access the meal.
- Contains preservatives as mold inhibitors.
- Blue marker dye can be seen in droppings.



# Maki<sup>®</sup>



## Bulk Pellets

- 20 lb. pail

- Active ingredient: bromadiolone (50 ppm), Vitamin K<sub>1</sub> is the antidote.
- Paraffinized pellets approved for burrow baiting.
- Works well where moisture is a concern.



## Pellet Place Packs

### 1.5 oz. place pack

- Case of 4 pails (75 packs/pail)

- Active ingredient: bromadiolone (50 ppm), Vitamin K<sub>1</sub> is the antidote.
- For hard-to-reach baiting locations away from non-target animals.
- Paraffinized formula works well where moisture is a concern.
- Special place pack film keeps pellets fresh until consumed by rodents.

## Paraffin Blocks

### 1 lb. block size (scored for easy separation into eight 2 oz. bars)

- Box of 20 blocks

- Active ingredient: bromadiolone (50 ppm), Vitamin K<sub>1</sub> is the antidote.
- Paraffinized 1 lb. blocks labeled for sewers, steam tunnels, outdoor stations and other places where moisture causes bait to quickly spoil.
- Center hole aids in sewer placements.

# BorderLine<sup>®</sup>



## Pellets

- 22 lb. bag

- Active ingredient: chlorophacinone (50 ppm), Vitamin K<sub>1</sub> is the antidote.
- Restricted Use Pesticide labeled for the outdoor control of Norway rats, roof rats, house mice and voles.
- Weather-resistant paraffinized pellets hold up to rain and irrigated conditions.



### Restricted Use Pesticide

*BorderLine is a restricted use product for use only by certified applicators or persons under their direct supervision. It is registered in AL, AZ, CA, CO, FL, HI, IA, ID, IL, IN, KS, MA, MI, MN, MO, MT, NE, NV, NC, ND, OK, OR, PA, SD, TX, UT, WA and WI. It is the responsibility of the user to read and follow all label directions.*

RODENT CONTROL

# BAIT STATIONS

Rodent bait stations have long been a key tool in the PMP's arsenal. High-performing, tamper-resistant and quick-to-open with one universal key, Aegis® bait stations offer a versatile design to help PMPs provide faster service. In combination with the right bait and with an entry/exit design that encourages rodents to enter, they are a popular and effective way to get ahead of an infestation of damage-causing rodents.



LIPHA TECH®

## Aegis®-RP



12 7/8" long; 7 7/8" wide (including hinge); 4" high (lid closed); 3 1/2" high (lid open).

- Use vertical or horizontal bait rods (included). Using elevated horizontal rods prevents bait from touching the station floor.
- Four fast-draining holes keep bait fresh and dry; operates down to -20° F for long service life.
- SecureV™ Technology reduces the ability of animals to free bait; compatible with snap traps.
- Mechanical hinge secures lid which opens conveniently away from wall; predrilled holes and knock-out anchor points provide multiple ways to secure station.



## Aegis®-RP Anchor



12 7/8" long; 7 7/8" wide (including hinge); 5 1/2" high (lid closed); 5" high (lid open).

- Versatile Aegis-RP station with over 11 pounds of concrete attached to keep the station securely where placed.
- Preassembled; building-grade concrete adds a professional look.
- Strengthening fibers are embedded in the concrete for extra durability.
- Design fits flush against wall or vertically oriented even with concrete attached.



## Aegis® Rat



13 9/16" long; 10 5/8" wide (including hinge); 3 1/2" high (lid closed); 3 1/8" high (lid open).

- Specifically designed to cater to the feeding habits of rats.
- Available in white (cool box), all-black, or black with clear lid.
- The clear lid model makes bait monitoring easy and efficient and allows servicers to quickly see snakes or insects that may be hiding inside.
- Strong rotating hinge won't crack or break when opened in cold weather.



## Aegis® Mouse



### Black Lid Station Dimensions

5 1/2" long; 4 5/16" wide (including hinge); 1 5/8" high (lid closed); 1 3/8" high (lid open).

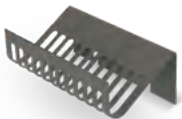
### Clear Lid Station Dimensions

5 7/16" long; 4 3/8" wide (including hinge); 1 9/16" high (lid closed); 1 15/16" high (lid open).

- Up to twice the bait capacity of most mouse stations.
- Clear lid allows for at-a-glance inspection and reduced service time.
- SecurePoint™ Technology holds blocks or soft bait tight in station.
- Can be mounted both vertically and horizontally; anchoring holes secure the station to floors, walls or pipes.



## SoftSecure™ Technology (SST)



- Easy-to-use device that secures soft bait or mini blocks inside the Aegis-RP and Aegis-RP Anchor bait stations.
- Bait is elevated at an optimum feeding angle; keeps bait in place and secure.
- Allows for the removal of the paper pouch. Bait can be placed directly on the SST.



## Bait Station Accessories



- Universal Aegis key easily opens all Aegis stations.
- Bait trays make clean-out easy.
- Horizontal or vertical bait rods easily secure bait in stations.



INTELLIGENT SOLUTIONS

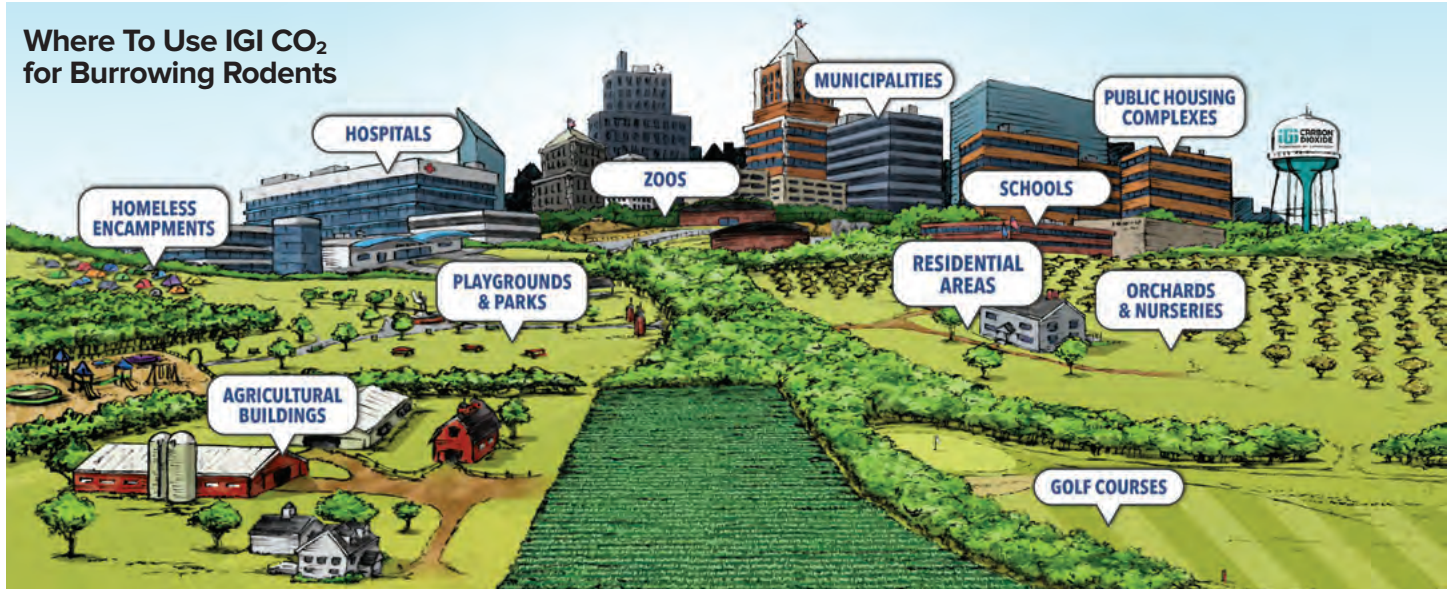
# POWERED BY LIPHATECH

Alternative pest control solutions *Powered by Liphatech* enhance the PMP's rodent and insect control arsenal. IGI CO<sub>2</sub> is an EPA-registered carbon dioxide that can be used to eliminate rodents in burrows and insects in agricultural commodities. It's a responsible approach to pest management that is consistent with the protocols and ideologies of Integrated Pest Management (IPM).



# IGI Carbon Dioxide (CO<sub>2</sub>) for Burrowing Rodents

## Where To Use IGI CO<sub>2</sub> for Burrowing Rodents



IGI CO<sub>2</sub> provides PMPs with an alternative approach to controlling burrowing rodents. Registered by the EPA as a pesticide, IGI CO<sub>2</sub> is different because it functions only when it is released in a confined space such as in burrowing rodent tunnel structures, where pests succumb to asphyxiation. Each pest has underground burrow or tunnel systems that are different.

- CO<sub>2</sub> gas used to control burrowing rodents can be quietly applied and is non-flammable, invisible and odorless.
- Kills pests including Norway rats, voles, groundhogs, moles, ground squirrels and pocket gophers.
- Approved for outdoor use only in field settings and in grounds and landscaping next to occupied municipal, residential and commercial buildings.
- IGI CO<sub>2</sub> must be used with The Eliminator™ Injection Device or The Eliminator Mini.

**System Includes:** Eliminator (available with 31" or 18" wand), 25' Gas Hose, Pressure Regulator and Gauge Assembly, Quick Connect Fitting, five (5) Spare Pressure Regulator and Gauge Assembly CO<sub>2</sub> Cylinder Valve Gaskets, Soil Piercing Probe, 16" Flexible Extension Tube and two (2) Cable Ties (cart sold separately)



# IGI Carbon Dioxide (CO<sub>2</sub>) for Commodities Insect Fumigation



Also EPA-registered for the treatment of agricultural commodities against a wide variety of insect pests, IGI CO<sub>2</sub> can be used in organic post-harvest applications. It is not an organic gas, but it is certified for use post-crop harvest to fumigate the producer's crops. Fumigation with IGI CO<sub>2</sub> leaves nothing behind after proper venting, nor does it affect the taste of fumigated product. The active ingredient in IGI is 99.9% CO<sub>2</sub>.

- CO<sub>2</sub> gas for insect fumigation can be quietly applied and is non-flammable, invisible and odorless.
- IGI CO<sub>2</sub> can be used in municipal, residential, commercial and field settings, including silos, storages, trucks, trailers, sealed railroad cars and cargo ships.
- Certified for use in pest management programs under the USDA National Organic Program.
- With IGI CO<sub>2</sub>, treatment hold times vary from 24 hours to 4 days.
- Use a 2-day treatment for killing adult insects and a 4-day treatment for killing all life stages of insects.

Components and accessories needed will vary depending on fumigation site and at the discretion of the licensed fumigator.



A WORLDWIDE LEADER

---

# HELPING PMPs ACROSS THE GLOBE

Liphatech is a subsidiary of France's Group De Sangosse, a worldwide leader in the manufacturing and distribution of pest control products. De Sangosse and Liphatech invest substantial resources in the research and development of new pest control technologies to better help PMPs and the industry. Liphatech employs responsible manufacturing and advocates for pest management practices that protect the health and safety of people, wildlife and the environment.

A NATIONWIDE NETWORK

---

# OUR SALES AND TECHNICAL EXPERTS

Our team is ready to help you with your particular pest challenges.  
Get in touch with a Liphatech technical expert in your area.



# LIPHATECH®

EXPERIENCED *People*. INTELLIGENT *Solutions*.

Our customers use Liphatech products because **they work**. Liphatech is well-known for its market-leading soft baits, mini block rodenticides, non-toxic attractants, bait stations and its IGI Carbon Dioxide (CO<sub>2</sub>) Powered by Liphatech, used for burrowing rodents and insect fumigation. Liphatech is a leader that stays ahead of the industry so our customers can too.

[liphatech.com](http://liphatech.com)

